



Co-funded by
the European Union

SEED4EU+ CALL 2025-2026

Info session

23 June 2025



Univerzita
Karlova



UNIVERSITÄT
HEIDELBERG
ZUKUNFT
SEIT 1386



PANTHÉON-ASSAS
UNIVERSITÉ
PARIS



SORBONNE
UNIVERSITÉ



KØBENHAVNS
UNIVERSITET



UNIVERSITÉ
DE GENÈVE



UNIVERSITÀ
DEGLI STUDI
DI MILANO



UNIwersYTET
WARSZAWSKI

4eu+



Co-funded by
the European Union

Introducing 4EU+ Alliance



Univerzita
Karlova



UNIVERSITÄT
HEIDELBERG
ZUKUNFT
SEIT 1386



PANTHÉON-ASSAS
UNIVERSITÉ
PARIS



SORBONNE
UNIVERSITÉ



KØBENHAVNS
UNIVERSITET



UNIVERSITÉ
DE GENÈVE



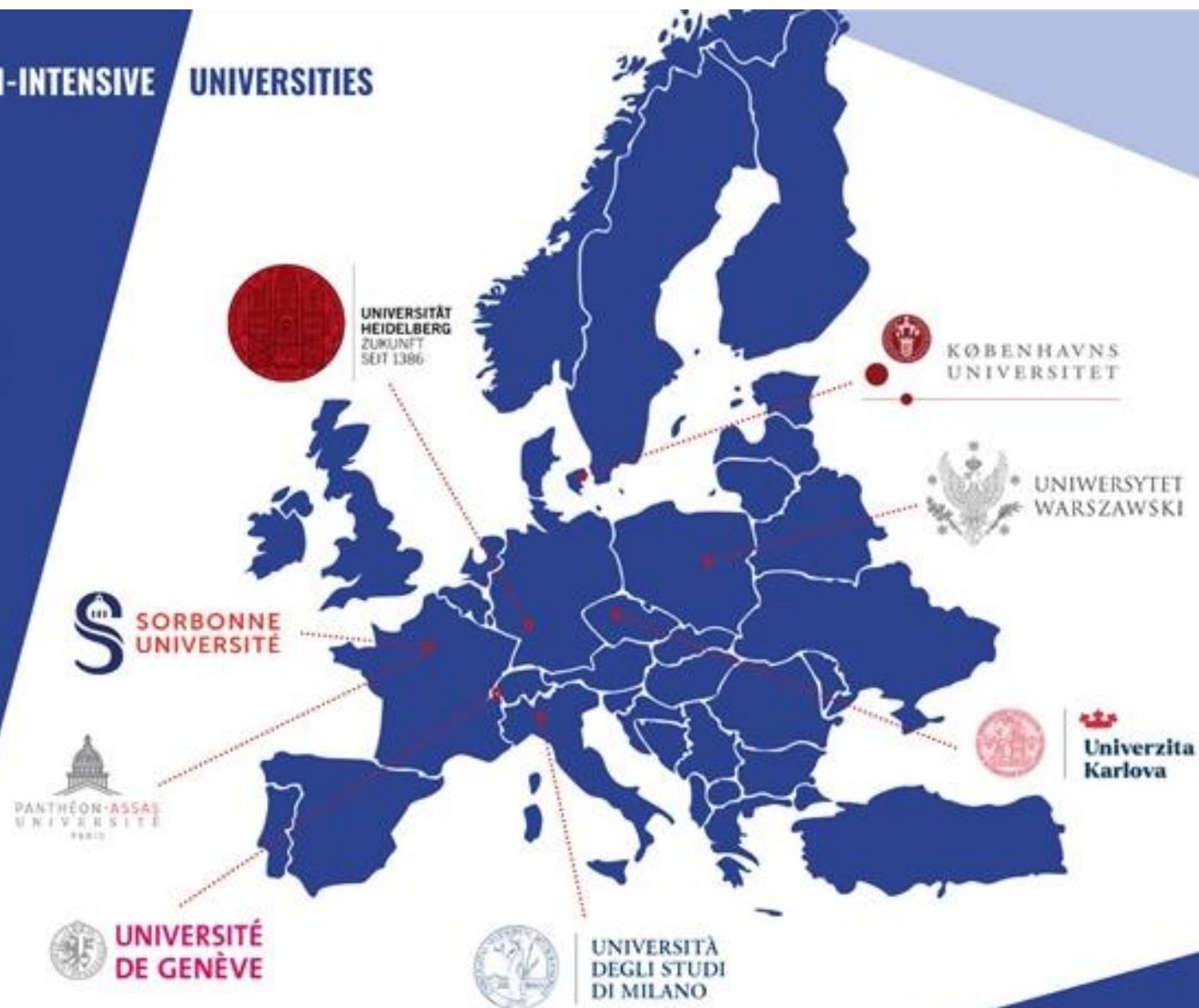
UNIVERSITÀ
DEGLI STUDI
DI MILANO



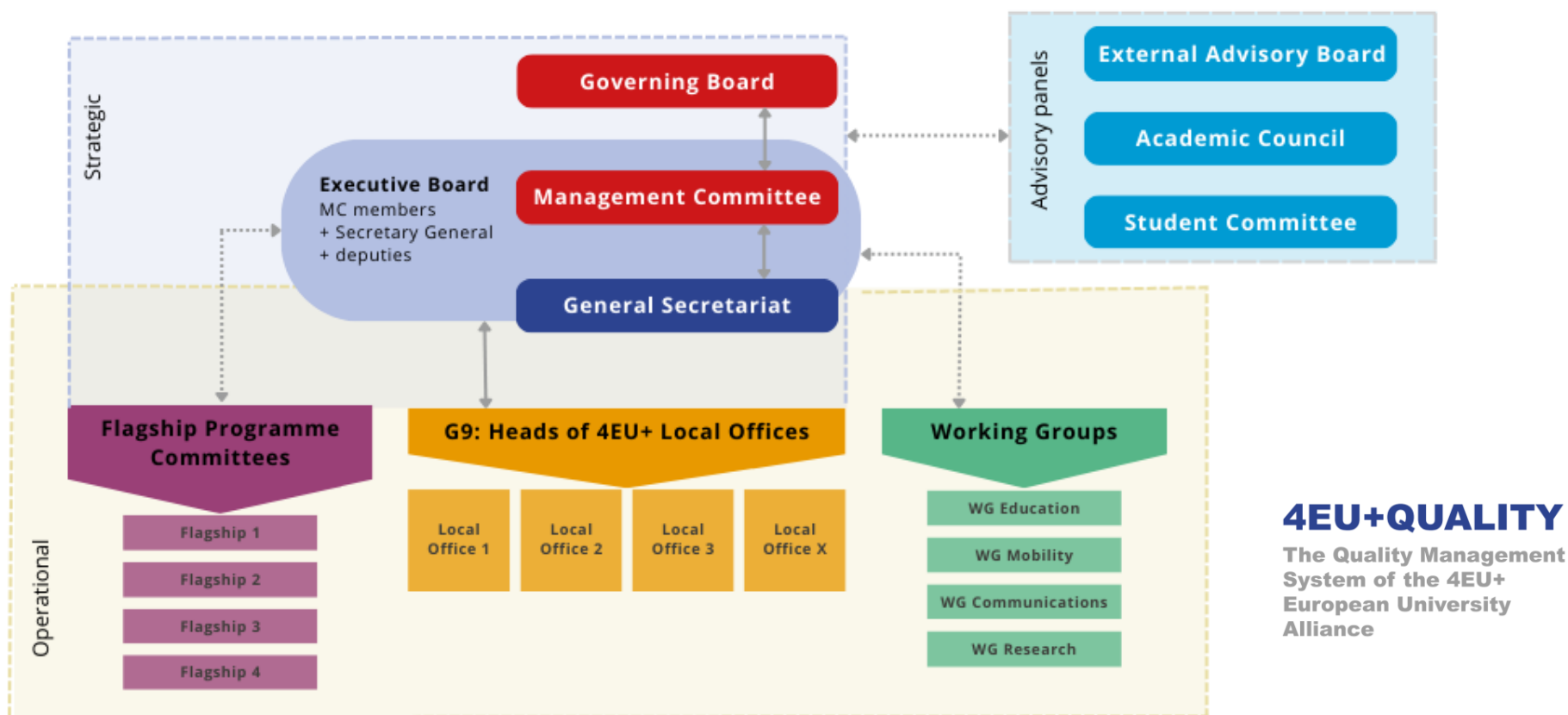
UNIwersYTET
WARSZAWSKI

8

RESEARCH-INTENSIVE UNIVERSITIES



A robust governance scheme and a legal entity....moving to Brussels



4 Flagship programmes



Flagship 1

Urban Health and Demographic Change



Flagship 2

Europeanness: multilingualism, pluralities,
citizenship



Flagship 3

Digitisation - Modelling - Transformation



Flagship 4

Environmental transitions

EU-funded projects

TRAIN4EU+ - SwafS Project

2020-2023

Transforming
ReseArch &
INnovation
agendas and
support in the
Alliance

Horizon Europe

ED – AFFICHE

2023-2024

European
Degree Label
Consortium of
European
Universities

ESEU

2023-2024

Legal Status
for European
Universities

Erasmus+

1CORE 2022-2026 European universities initiative – 'framework' project

Erasmus+

RM Framework 2024-2027

– Horizon
Europe –
WIDERA.
Coordinator
EARMA

Research
Management

Horizon Europe

FOR- EU4ALL 2024-2026 Community of Practice for European Universities

Erasmus+

4EU+MICI 2024-2026 Policy Experimentatio n Call Micro- credentials

Erasmus+

4EU+ Eternity Project

Funded by
Polish National
Agency for
Academic
Exchange
(NAWA) 2024-
2026. Top-up for
activities
complimentary
to those in
1CORE.

Internally funded projects

4EU+ Mini-Grants

For students and academics
– multiple editions

4EU+ Cotutelles

OUTREACH PROJECTS

International Geneva

4EU+ Visiting Professorships Call

2023-2024
2024-2025

SEED4EU+

2023-2024
2024-2025

Grant Support
Service - GSS



Strategy 2025-2035

The 4EU+ Alliance's Strategy 2025-2035 charts the course towards building One Comprehensive Research-Intensive European University, outlining ambitions and actions across education, research, innovation, and outreach.

[Read more](#)

Website: <https://4euplus.eu/4EU-1001.html>

- A framework for **expanding and deepening collaboration** within and across missions
- Accompanied by an **Action Plan**: a tool to **monitor** and **prioritize** both new initiatives and the resources already invested in current initiatives

4eu+



Co-funded by
the European Union

The 4EU+ Seed Call



Univerzita
Karlova



UNIVERSITÄT
HEIDELBERG
ZUKUNFT
SEIT 1386



PANTHÉON-ASSAS
UNIVERSITÉ
PARIS



SORBONNE
UNIVERSITÉ



KØBENHAVNS
UNIVERSITET



UNIVERSITÉ
DE GENÈVE



UNIVERSITÀ
DEGLI STUDI
DI MILANO



UNIwersYTET
WARSAWSKI

4EU+ GLOSSARY

8 PARTNERS

Charles University, Heidelberg University, Paris-Panthéon-Assas University, Sorbonne University, University of Copenhagen, University of Geneva, University of Milan, University of Warsaw

4 FLAGSHIPS

Four thematic areas for our interdisciplinary activities

STRATEGY 2025-2035

The Alliance's goals for the coming **10 years**

LOCAL 4EU+ OFFICERS

University staff working in the Alliance

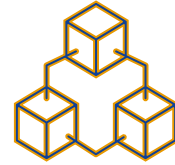
ASSOCIATED PARTNERS

18 Partner Organisations (Enterprises, Local authorities, Research Institutes, Chambers of Commerce, Industry associations and social partner)

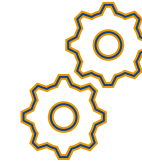
WHAT IS SEED ABOUT?



Funding the implementation of novel ideas, starting points for possible long-term collaboration



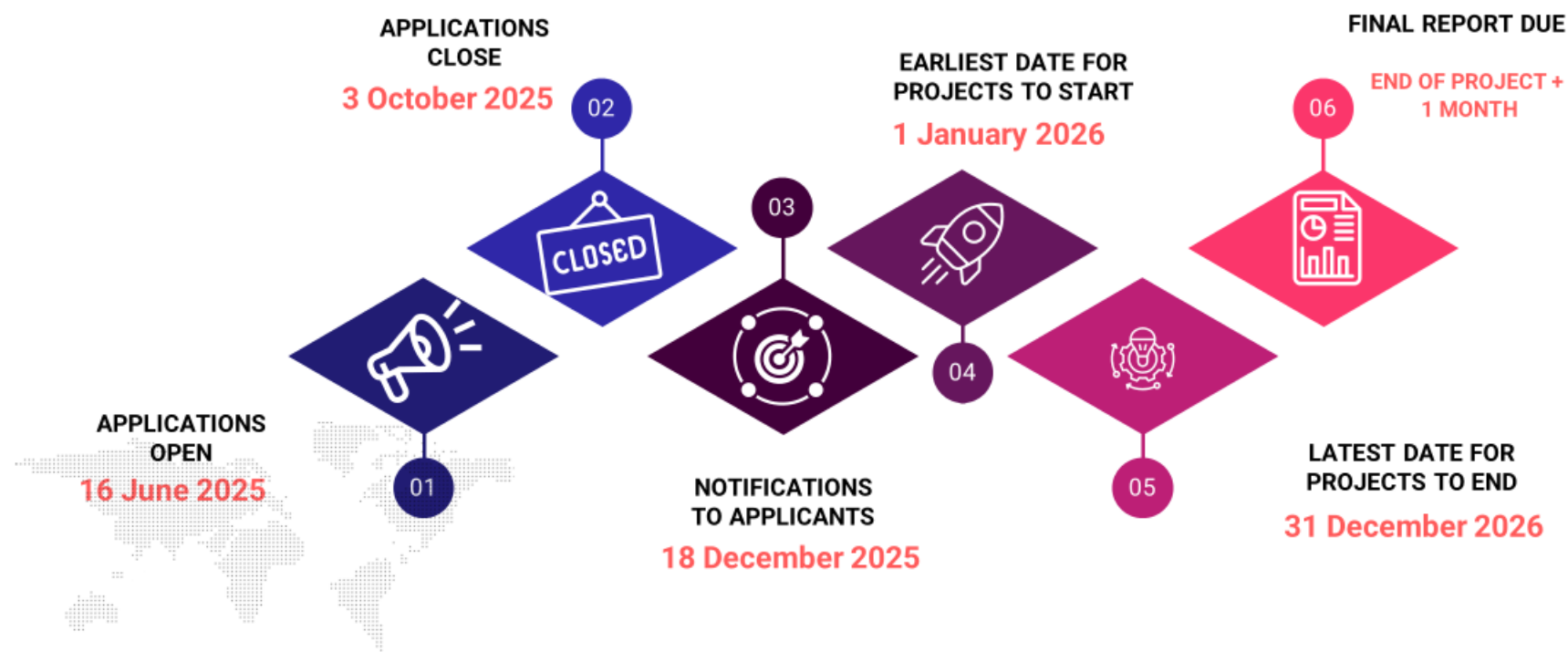
Foster 4EU+ cooperation on initiatives with the aim of developing One Comprehensive Research-Intensive European University



Research (primary focus) and education

Characteristic: Success rate around 35% and easy project application

SEED CALL TIMELINE

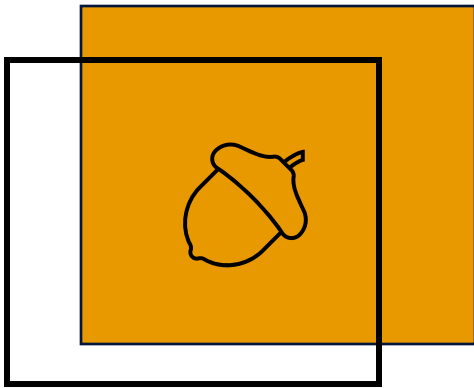


APPLICATION REQUIREMENTS

What to
remember?

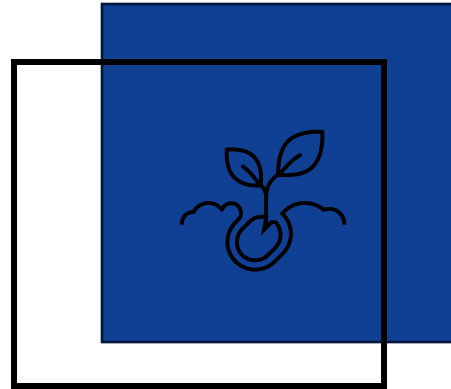
- ✓ At least **THREE 4EU+ member universities**
- ✓ **PhD and employment contract for the applicants (PI) and Local Project Coordinators (until the end of the project period)**
- ✓ Duration of the project: **12 months (calendar year)**
- ✓ Budget allocated among **all** the partners
- ✓ **Letter of intent:** Each local coordinator provides a letter of intent signed by the head of the faculty/department/institution

WHAT IS EVALUATED?



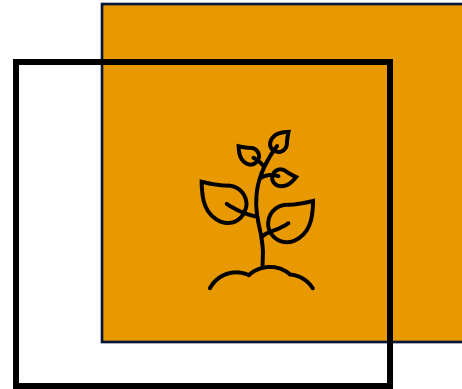
Objectives & Methodology

- ✓ Relevance for 4EU+ Strategy



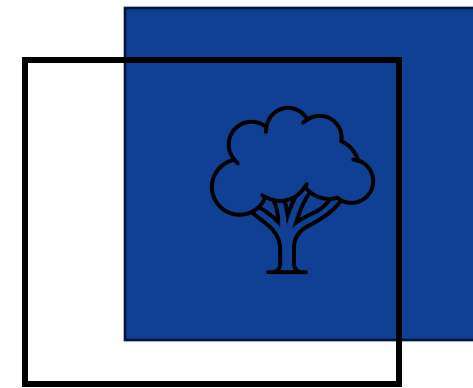
Novelty

- ✓ Ambitious and innovation
- ✓ Add steps to previous funded project



Implementation

- ✓ Role of each partner
- ✓ Expertise brought by the consortium

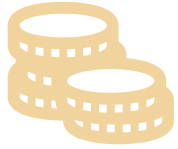


Expected results & Sustainability

- ✓ Project value for the Alliance
- ✓ Scale up the collaboration and results beyond the project end

BUDGET

Useful recommendations :



The maximum funding available **per project is € 50.000**. To build the budget for your project, it is recommended to define your activities precisely, as it is a constructed budget, meaning **each university involved in the project brings its own funding to the project**.



We highly recommend contacting the **4EU+ local office** at your university for any budget questions or concerns during the project building process, **both as a Coordinator and a partner. (at least two weeks before the submission, preferably earlier)**.



The expected **EARLIEST date for projects to start is 1st January 2026**, and the funding must be used **within that year**.

Activity/Cost	
Travel and subsistence expenses: airfare (economy class), train, car rental, lodging, meals, visas, or similar	eligible
Costs of hosting seminars/conferences or workshops (e.g., venue rental, catering, lodging)	eligible
Consumables and supplies as proportionate with activities	eligible
Publications (related to collaborative research) costs, including Open Access fees	eligible
Hiring student assistants	eligible/not eligible*
Internship stipends	eligible/not eligible*
Salaries for support teams (scientific, administrative)	eligible/not eligible*
Internal invoicing for access to research infrastructures	eligible/not eligible*
Subcontracting	eligible/not eligible*
Scientific equipment	eligible/not eligible*
Stipend payments to non 4EU+ member institutions individuals	not eligible
Fellowships, scholarships for theses	not eligible
Website development	not eligible
Entertainment costs	not eligible
Office supply and furniture	not eligible
Indirect costs	not eligible



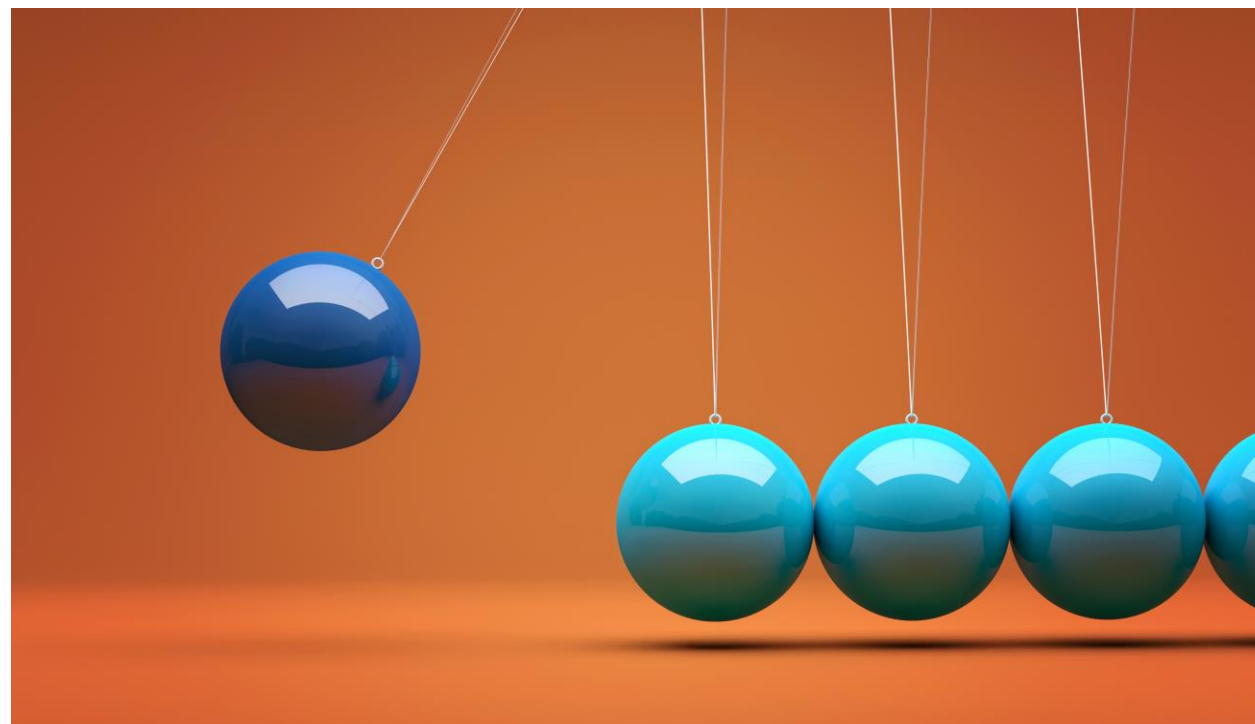
The * sign in the eligibility costs means that applicants should contact their 4EU+ local office to check if they are eligible for these types of costs.

Activity/Cost	
Travel and subsistence expenses: airfare (economy class), train, car rental, lodging, meals, visas, or similar	eligible
Costs of hosting seminars/conferences or workshops (e.g., venue rental, catering, lodging)	eligible
Consumables and supplies as proportionate with activities	eligible
Publications (related to collaborative research) costs, including Open Access fees	eligible
Hiring student assistants	eligible/not eligible*
Internship stipends	eligible/not eligible*
Salaries for support teams (scientific, administrative)	eligible/not eligible*
Internal invoicing for access to research infrastructures	eligible/not eligible*
Subcontracting	eligible/not eligible*
Scientific equipment	eligible/not eligible*
Stipend payments to non 4EU+ member institutions individuals	not eligible
Fellowships, scholarships for theses	not eligible
Website development	not eligible
Entertainment costs	not eligible
Office supply and furniture	not eligible
Indirect costs	not eligible



The * sign in the eligibility costs means that applicants should [contact their 4EU+ local office](#) to check if they are eligible or not.

Are you looking
for inspiration?
Check the past
projects [here](#)



Are you looking for project partners? Use these tools



Fill in the **form** and let your 4EU+ colleagues know what your work is about.



Have **a look** at the SEED collaboration opportunities already shared through the form.





QUESTIONS & ANSWERS

FAQs

- **Can someone be both the PI and the local coordinator for a project? Or do these need to be separate people?**

The PI works as the Local project Coordinator in their local research unit (e.g., Unit n. 1). A local project coordinator will also be present in Unit n. 2 of a partner university and Unit n. 3 of a third partner university. Each unit can consist of many members, who are coordinated in their work by the local project coordinator.

- **How many applications did you receive last year, and how many were funded?**

The success rate in the last years was about 35%.

- **Could you help us find the partners?**

To look for partners you can fill [this form](#) and visualize your 4EU+ colleagues' proposals in [this file](#). In addition, you can have a look at the contact information of Flagship coordinators who can put you in contact with other researchers matching your project: <https://4euplus.eu/4EU-576.html>

FAQs

- **Can temporary researchers submit a project application?**

Temporary researchers can submit a project proposal; however, it is very important that the SEED project is covered for its entire duration. This means that if the PI's contract ends before the project or they need to leave the project, a colleague within the same University and with all the requirements should take over the project leadership. We suggest writing an email to your local office to present the situation.

- **My colleagues and I from other alliance universities are planning to apply for a PhD Summer School funding. Is it possible to fund the participation for PhD candidates from academic institutions outside of 4EU+ alliance, esp. from the Global South?**

No, the SEED grant can only support activities from the Alliance' Universities. Professors/researchers from other universities can participate in the SEED project, but their activities/work/costs can not be funded through SEED.

- **In 2026 a PhD summer school is planned (so far without funding). Is this something we could apply for within the SEED as well?**

Yes, as long as there is no double funding it might be an option.

FAQs

- **Is it possible to use this call for cooperation on developing a microcredential course?**

Yes. We suggest you consult our website and the 4EU+ [MICI project](#).

- **Does all the money have to be spent in 2026?**

Yes, the funding must be used within that year.

- **Are universities required to contribute internal funding in addition to the allocated amount?**

No, they are not. The maximum budget allocated to the project is EUR 50,000. This amount must be shared among the partner institutions involved in the project.

- **Could you please clarify how the financial management works? Does the full amount go first to the coordinating university, which then distributes funds to the partners according to the agreed budget? Or is each partner directly allocated their share of the funding by the 4EU+?**

Yes, each partner directly allocated their share of the funding. Each Partner university manages the funding distribution according to local rules. You will be informed after the notification of the results.

USEFUL REFERENCES

4EU+ Strategy: 2025-2035	https://4euplus.eu/4EU-470.html?
About 4EU+ Flagships	https://4euplus.eu/4EU-576.html? https://4euplus.eu/4EU-890.html
4EU+ Teaching & Learning Toolbox	https://4euplus.eu/4EU-971.html?test=1&
Grant Support Service (GSS)	https://4euplus.eu/4EU-738.html?test=1&
4EU+ MICI	https://4euplus.eu/4EU-890.html

Please get in touch with your 4EU+ Local Office for any questions!

-  Charles University: 4euplus@cuni.cz
-  Heidelberg University: 4euplus@rektorat.uni-heidelberg.de
-  Paris-Panthéon-Assas University: 4euplus@assas-universite.fr
-  Sorbonne University: 4euplus-su@sorbonne-universite.fr
-  University of Milan: 4euplus@unimi.it
-  University of Copenhagen: 4euplusucph@adm.ku.dk
-  University of Geneva: 4euplus@unige.ch
-  University of Warsaw: 4euplus@uw.edu.pl





Save the date!
8 September at 4pm

A second **Info Session** to present the SEED Call. **Perspective applicants** are highly welcome for questions.
Fill in this **form** to register!

4eu+



Co-funded by
the European Union

Thank you!
Get started today!



Univerzita
Karlova



UNIVERSITÄT
HEIDELBERG
ZUKUNFT
SEIT 1386



PANTHÉON-ASSAS
UNIVERSITÉ
PARIS



SORBONNE
UNIVERSITÉ



KØBENHAVNS
UNIVERSITET



UNIVERSITÉ
DE GENÈVE



UNIVERSITÀ
DEGLI STUDI
DI MILANO



UNIwersYTET
WARSAWSKI